

3307 Complex Phase II: Wrestle Creek – Transmission Line Project

AES Ohio is proposing upgrades to the local power grid, known as the “3307 Complex Phase II: Wrestle Creek Transmission Line Project (the “Project”), and is investing in the electric transmission system to improve the resiliency and reliability, increase operational flexibility, and to meet the requirements of the surrounding transmission network. The Project involves building approximately 6 miles of 69kV transmission line from a proposed tie-in location on the proposed AES Phase I Line, to the proposed Wrestle Creek Substation near the Village of Waynesfield, Ohio.

What

The Project includes :

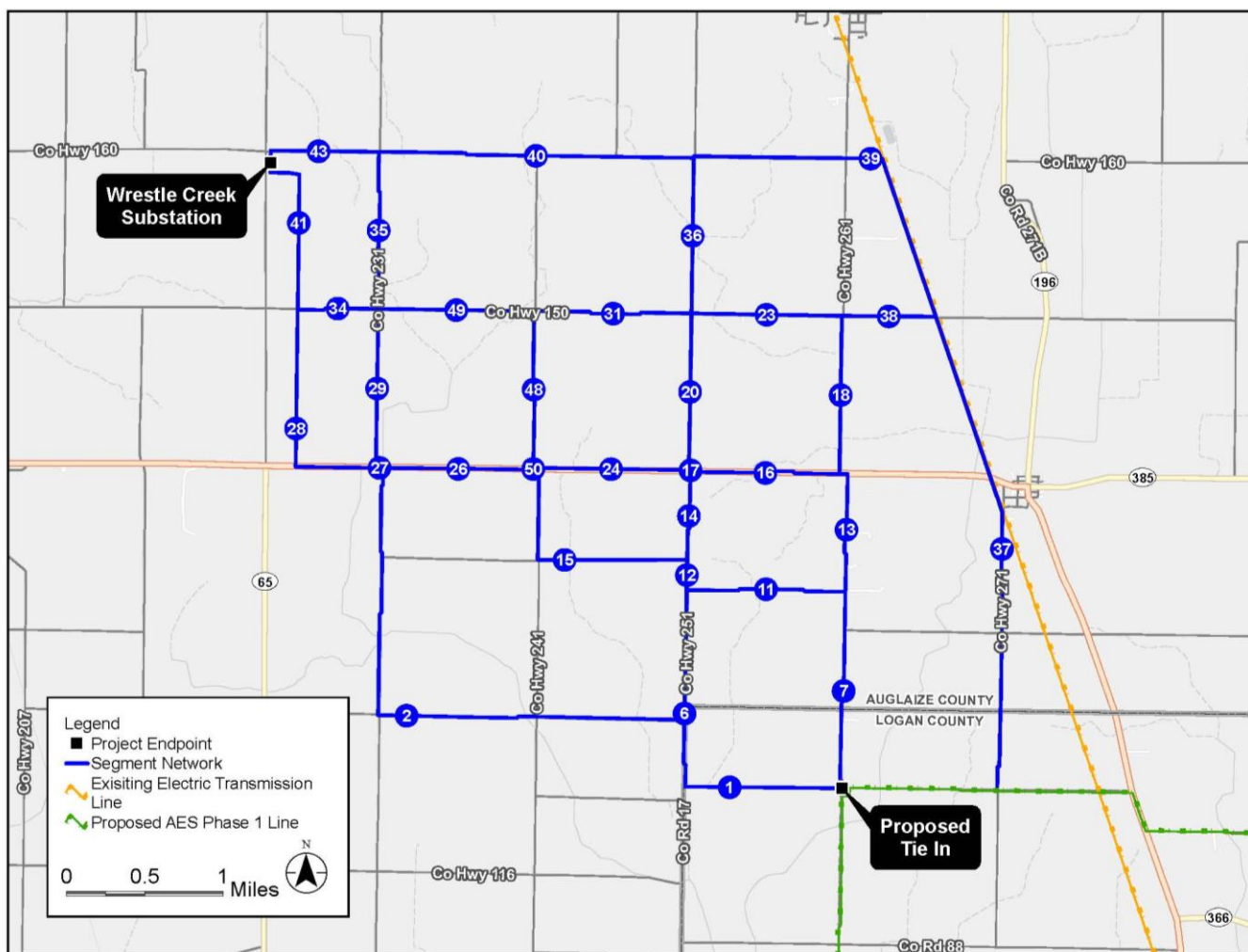
- ➔ Building approximately 6 miles of single-circuit 69kV transmission line from a proposed tie-in location on the proposed AES Phase I Line to a new Wrestle Creek Substation near the Village of Waynesfield.
- ➔ One new substation near Waynesfield, Ohio.

Why

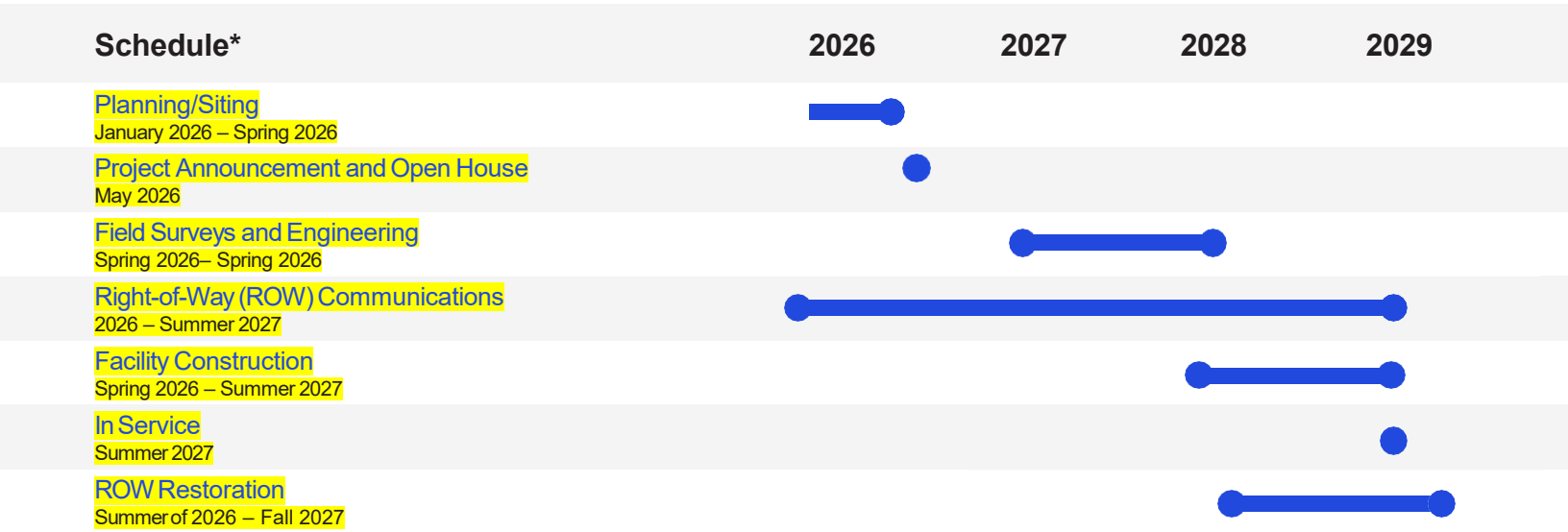
The proposed Project is in response to load growth and the need for stronger ties north of Indian Lake.

Where

- ➔ Auglaize County
- ➔ Logan County
- ➔ Village of Waynesfield
- ➔ Village of New Hampshire



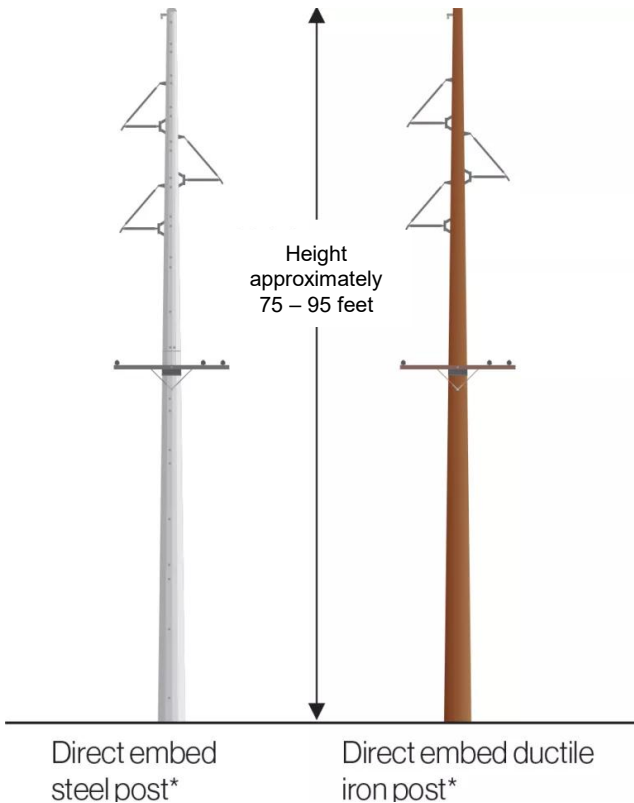
3307 Complex Phase II: Wrestle Creek – Transmission Line Project



*Schedule is preliminary and subject to change.

Typical Structures

The Project involves the use of self-supporting steel and ductile iron poles on foundation with heights ranging from approximately 75 - 95 feet with an approximate ROW easement width of 25 - 50 feet.





*Final structure height, structure type, and ROW easement width may vary.


Where Can I Get More Information?

AES Ohio values your input.

Please provide your feedback using one of the methods listed below:

Email:
 AESOhio@stantec.com

Mail:
 Stantec ATTN: AES Project Team
 1500 Lake Shore Drive, Suite 100
 Columbus, OH 43204-3800

Call:
 713-332-2833

Company Overview

- ➔ Serving 539,000 customers across 24 counties
- ➔ Approximately 18,000 miles of transmission, distribution and underground lines
- ➔ 6,000 square mile service territory
- ➔ Employing more than 900 people

AES Ohio invests in our equipment and technology to create a stronger, safer and more efficient electrical system. We know our customers depend on us to provide the electricity they need to power their lives.